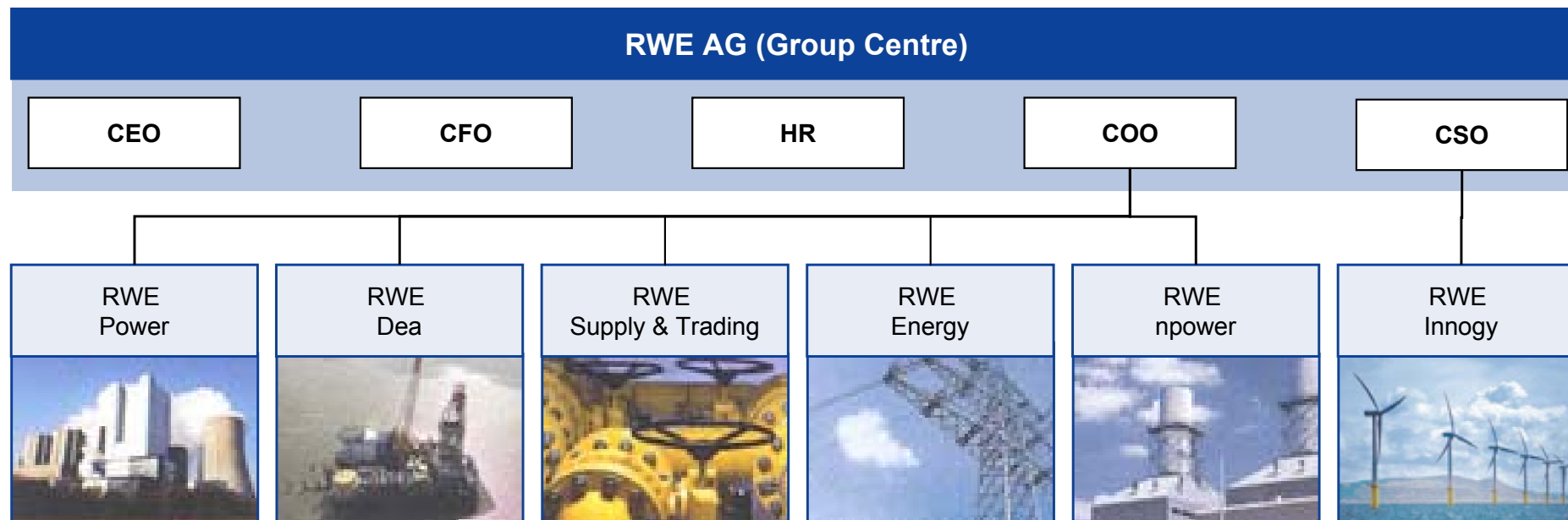


RWE Group Structure



- The new, leaner Group organisation has become effective April 1, 2008.
- RWE Trading and RWE Gas Midstream were merged into the new RWE Supply & Trading.
- Two new roles on the Group Centre board:
 - Chief Operating Officer (COO) who is also head of the supervisory boards of the operational companies. This supports best practice operational excellence across the value chain and across all divisions.
 - Chief Strategy Officer (CSO): Concentration of strategy, M&A and R&D including renewables.